

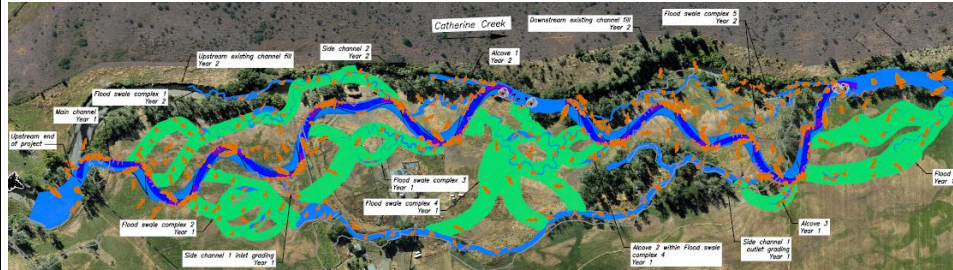
Confederated Tribes of the Umatilla Indian Reservation DNR Fisheries Program Project Semiannual Report Grande Ronde Subbasin Fish Habitat Restoration

Period: July 1 – December 31, 2016



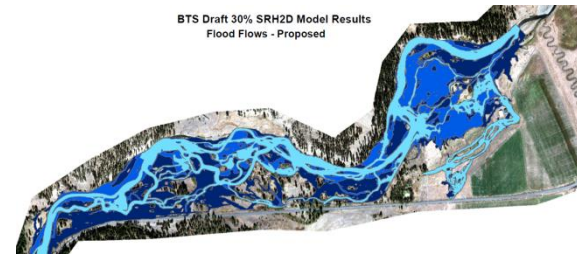
Project Inputs:	Funding	16 Budget	Total Staff	New 2016 Staff
	BPA	\$1,681,312	3 Bios; 1 Tech 3, 1 Tech 1, & 2-4 seasonal techs	1 permanent Biologist and 1 Technician I
	BOR	\$176,638		

Catherine Creek, RM 44, Southern Cross Conservation Property
Fish Habitat Restoration



Bird Track Springs Fish Habitat Restoration 30% Design

BTS Draft 30% SRH2D Model Results
Flood Flows - Proposed



Project Statement/Goal: Protect, enhance and restore functional, healthy and sustainable floodplain, channel and watershed process for the purpose of protecting and restoring fisheries and aquatic species in the Grande Ronde Basin.

Project Objectives: Specific project objectives are developed to address habitat limiting factors determined during baseline surveys and assessment. Objectives for reporting period are directed towards planning/design of new projects in preparation for implementation.

Outputs (specific 6-mo task accomplishments):

- Initiated CTUIR-BPA FY17 SOW and Budget.
- Continued fish habitat project planning and development under FY15-2018 BOR Funding Agreement SOW and Budget, including Bird Track Springs, Rock Creek, and Catherine Creek (CC42) Projects
- Continued project monitoring.
- Completed fish salvage operations for CC44 project construction.
- Administered Year 2 Construction CC44 Southern Conservation Property. Completed construction
- Continued project planning and development on Rock Creek for summer 2017 construction
- Participated in planning and design for Bird Track Springs Fish Habitat Restoration Project.
- Continued evaluation of acquisition properties in Grande Ronde Basin.
- Continued custodial activities on CC44 Southern Cross Conservation property.
- Initiated fence construction on CC44 Southern Cross Property, CC44 Kinsley Conservation Easement and Dark Canyon, Cunha permanent conservation easement along Dark Canyon and Meadow Creek for a total of 10.2 miles of riparian enclosure fence.
- Continued participation on Grande Ronde Atlas and Catherine Creek Atlas Implementation Team.
- Continued participation on GRMW Board of Directors and Technical Review Team.
- Participated in collaborative process with watershed partners to develop and begin implementation of OWEF FIP and NRCS RCCP funding programs.

Outcomes (progress and trends resulting from outputs):

- Improved instream habitat diversity and complexity along Catherine Creek, Rock Creek and mainstem Grande Ronde Rivers.
- Progress on land/easement acquisitions with landowner coordination on Catherine Creek prospect.
- Collaboration with basin partners in evaluating Catherine Creek and Upper Grande Ronde Watershed and developing basis from which to finalize Atlas project ranking and prioritization plans.
- Increased funding and collaboration through OWEF FIP and NRCS RCCP Programs.

Impacts (long-term accomplishments and vision):

- Contribute to achievement of healthy watersheds (DNR River Vision) and increased traditional first food abundance and use opportunities.
- Contribute to achievement of Subbasin Plan and ESA Recovery Plan goals.
- Assist in recovery of Endangered Species Act subject species (spring/summer chinook, summer steelhead, bull trout)
- Address water quality limiting factors as per Clean Water Act 303d list